

**Note for customers using PIC 32 USB Starter Kit II.**

Please note that the project GOLDemo PIC32MX460F512L SSD1963 Ultima R4.mcp was developed with an old version of PIC32 USB Starter Kit I.

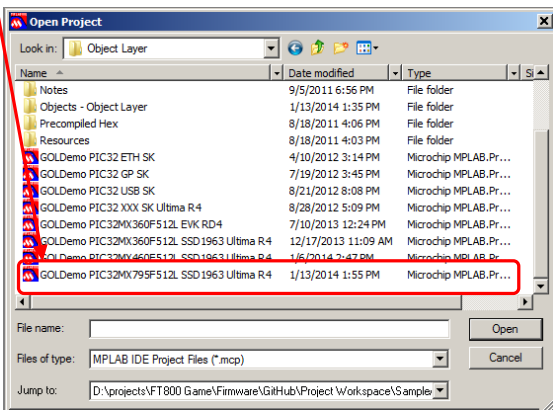
Most probably you are using PIC 32 USB Starter Kit II, which is based on PIC32MX795F512L.

PIC32 USB Starter Kit II is compatible with PIC32 Ethernet Starter Kit regarding the interface to SSD1963.

As a result, please use the project GOLDemo PIC32MX795F512L SSD1963 Ultima R4.mcp for the hardware combination

PIC32 USB Starter Kit II (DM320003-2) + SSD1963 Ultima Board version 4.1 or

PIC32 Ethernet Start Kit (DM320004) + SSD1963 Ultima Board version 4.1



For the hardware combination PIC32 Starter Kit (**DM320001**), please use the project

GOLDemo PIC32MX360F512L SSD1963 Ultima R4.mcp.

From HardwareProfile.h, select the host board and TFT size you are using.

For PIC 32 USB Starter Kit II, please go ahead to select #define PIC32\_ETH\_SK.

Use the configuration for PIC32 ETH SK just like PIC32 USB Starter II.

