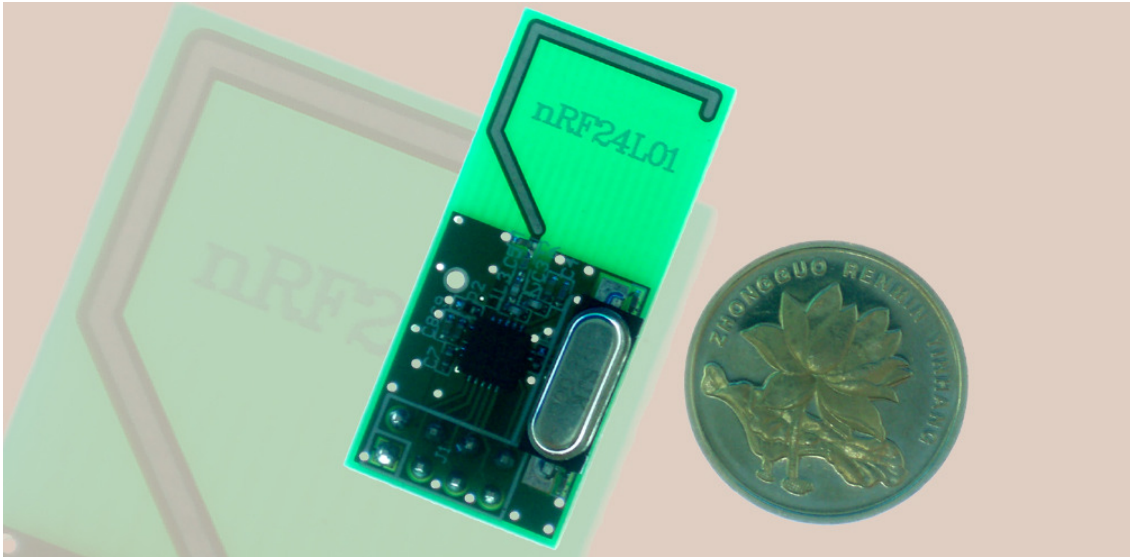


## Nordic nRF24L01 2.4GHz wireless module



### Specifications

Nordic nRF24L01 single chip 2.4GHz transceiver

Worldwide 2.4GHz ISM band operation

126 RF channels

1 or 2Mbps on-air data rate

Programmable output power : 0, -6, -12, or -18dBm (~20m transmission range)

Operation voltage 1.9V - 3.6V

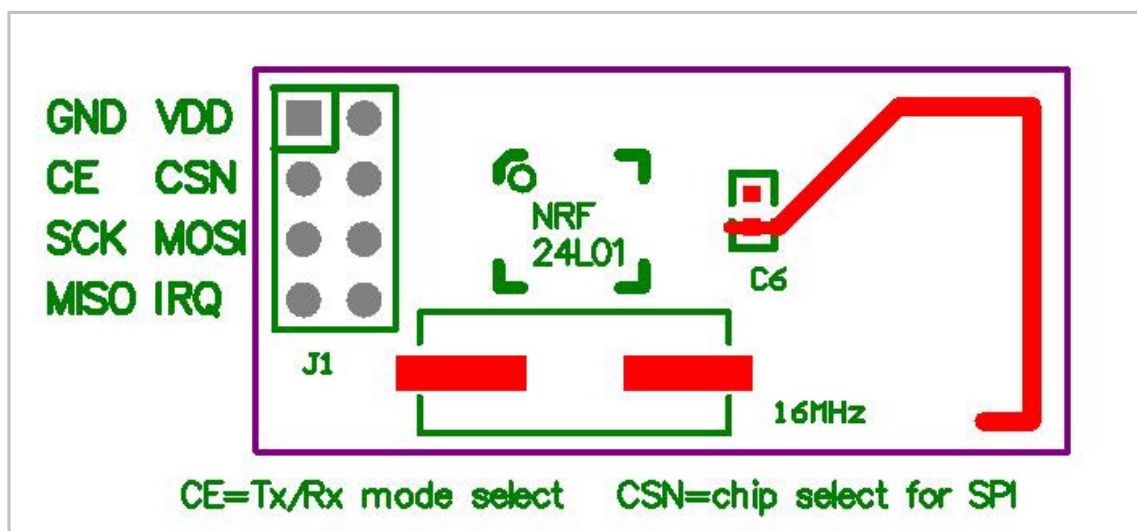
Transmission power rating 7mA@-18dBm; 11mA@0dBm

Current rating in receive mode @ 12.5mA at 2Mbps

Current rating in power down mode @ 0.4µA

Simple SPI interface for microcontrollers

FR-4 1.6mm double side PCB of size 34x16mm



Top overlay and pinout diagram